

Plans For the First Release of Small Area Data from the American Community Survey

DC AAPOR Informational Session
November 2010

Outline

Measuring America

Motivation behind the ACS

ACS basics

Release of data for small areas

Comparisons with Census 2000

What you need to know

Measuring America

American Community Survey

Demographic Analysis

2010 Census

Measuring America

Dimensions of Differences

Time

Level of geographic detail

Counts versus characteristics

Motivation for the ACS

Support the growing data needs of federal, state, tribal, and local governments by producing critical data throughout the decade

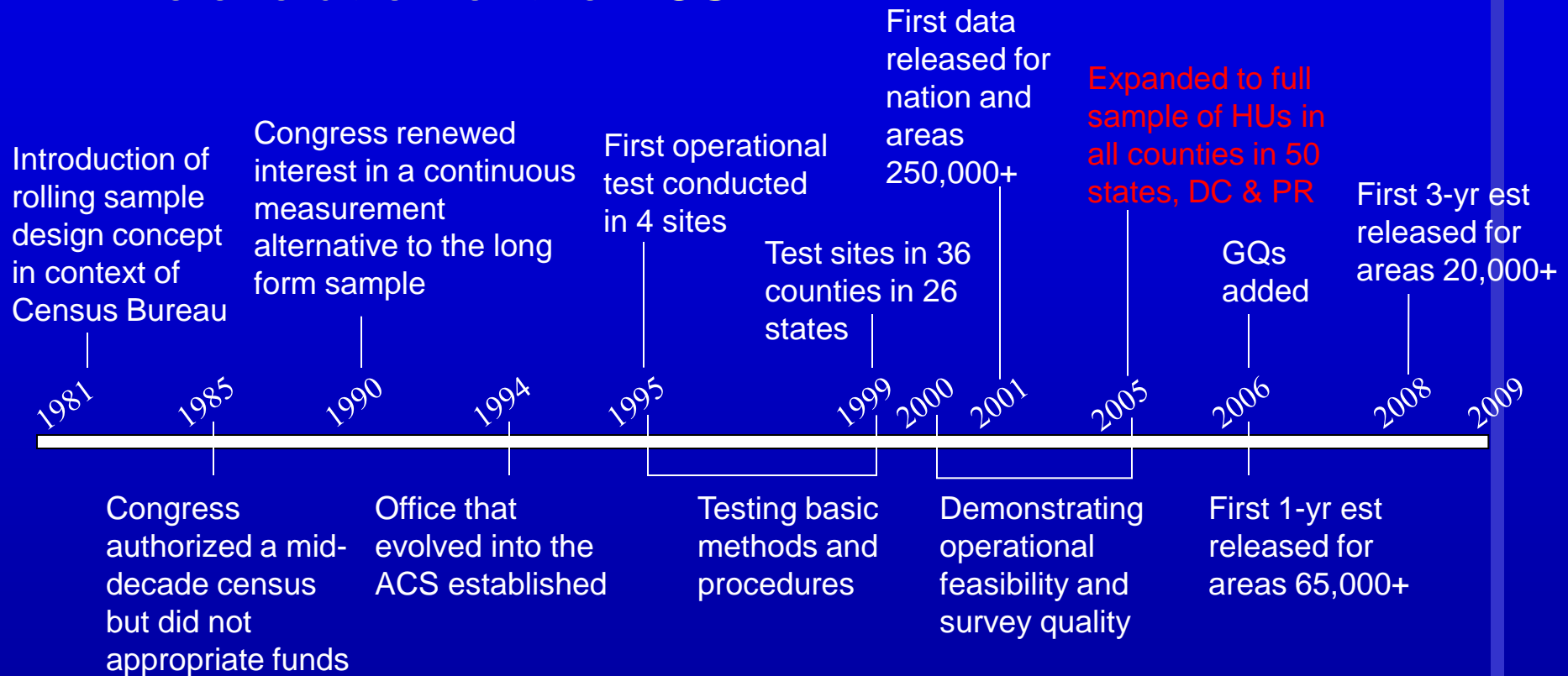
Simplify the 2010 Census

The figures from the 2009 American Community Survey offer a more intimate portrait of U.S. workers in the middle of a recession than has been available in previous downturns because the Census Bureau now gathers detailed information annually instead of once every 10 years.

Washington Post October 19, 2010

How we got here

The evolution of the ACS



ACS Basics

The ACS collects data continuously throughout the year

ACS sample interviews are combined over 1-year, 3-year, and 5-year periods to produce estimates for increasingly smaller geographic areas

ACS Basics

ACS estimates are period estimates, describing the average characteristics over a specified period

1-year, 3-year, and 5-year estimates will be released for geographic areas that meet specific population thresholds

ACS Basics

Estimated Population of Geographic Area	Type of ACS Estimates Released
Less than 20,000	5-year
20,000 to 64,999	3-year and 5-year
65,000 or more	1-year, 3-year, and 5-year

ACS Basics

Data product	Population threshold	Year of Data Release							
		2006	2007	2008	2009	2010	2011	2012	2013
		Year(s) of Data Collection							
1-year estimates	65,000+	2005	2006	2007	2008	2009	2010	2011	2012
3-year estimates	20,000+			2005– 2007	2006– 2008	2007– 2009	2008– 2010	2009– 2011	2010– 2012
5-year estimates	All areas*					2005– 2009	2006– 2010	2007– 2011	2008– 2012

Small Area Data Release

This year we will release the first set of ACS 5-year estimates based on data collected in 2005 – 2009

These are the first detailed characteristics for small areas since the release of Census 2000 sample data in 2002

Small Area Data Release

Timing

Level of geographic detail

Content and products

How to access

How to interpret the data

Timing

Planned release of 5-year estimates in
December 2010

We plan to release ACS 5-year tabulated
data products every year

Geographic Areas

Like the sample data from Census 2000, the ACS 5-year estimates will be summarized for legal, administrative, and statistical areas

Examples of Legal and Administrative Areas

States, Puerto Rico, and DC

Congressional Districts

Counties and *municipios*

Alaska Native Areas, Hawaiian

Homelands, American Indian Areas

Incorporated Places (cities, towns)

School Districts

Examples of Statistical Areas

Census regions and divisions

Urban areas and *zonas urbanas*

Census designated places

Metropolitan and Micropolitan Statistical
Areas

Census tracts

Census block groups

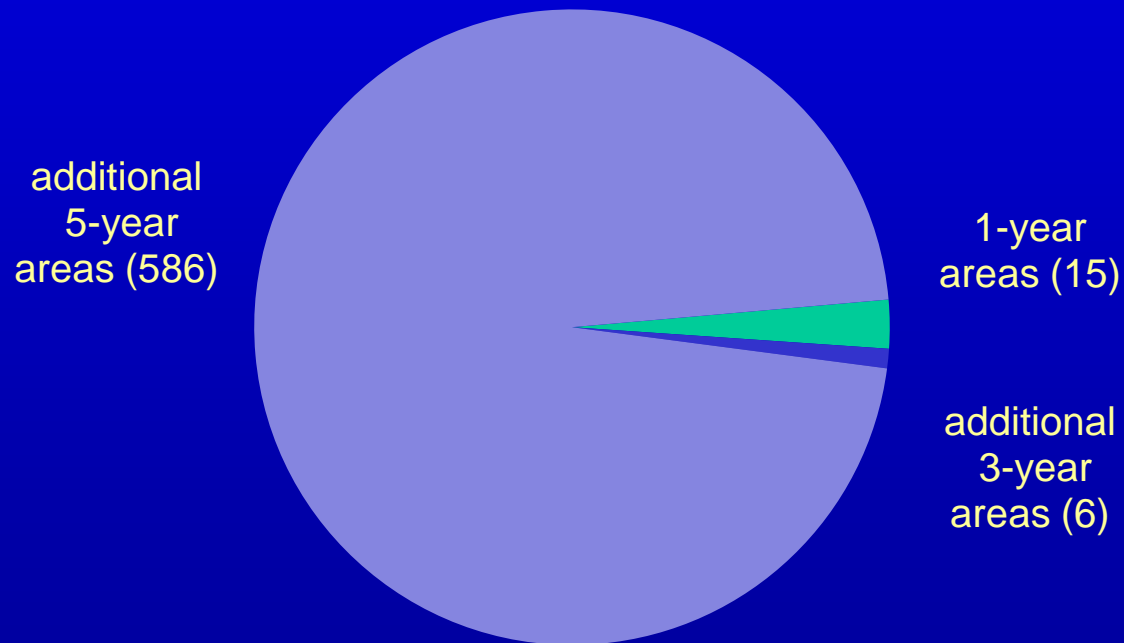
Geographic Expansion

Growth in the total number of entities supported for previously released types of areas

Additional types of geographic areas

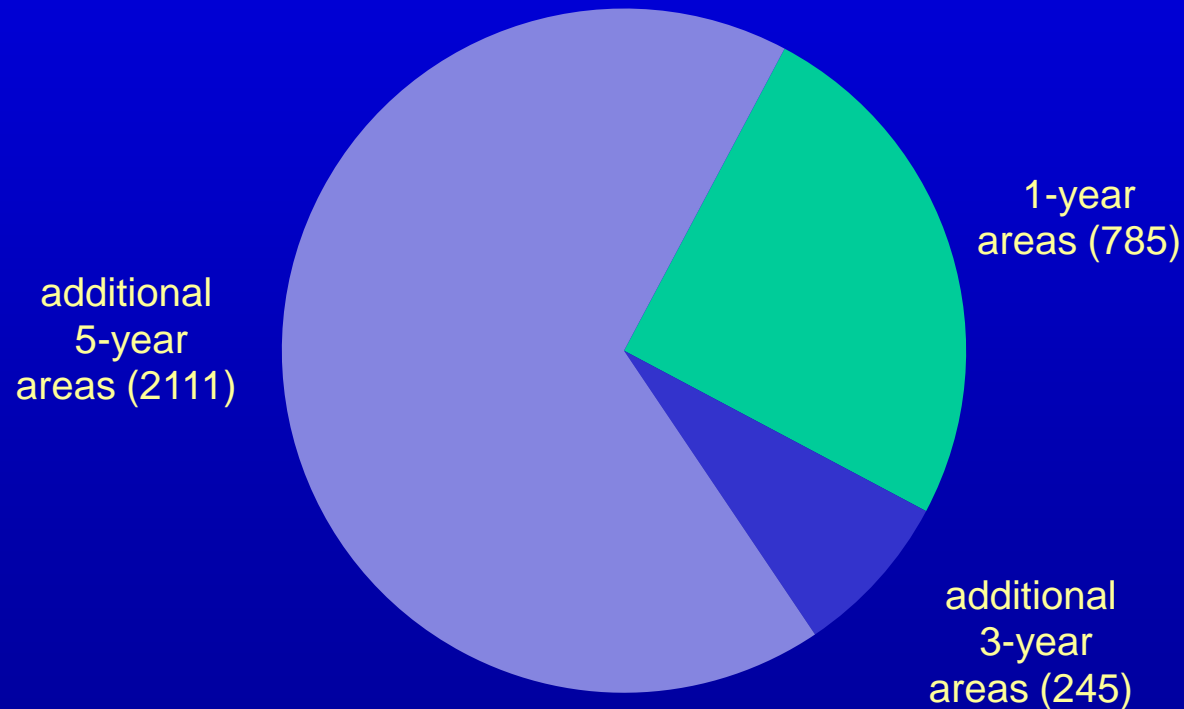
Geographic Expansion

American Indian Areas, Alaska Native Villages,
Hawaiian Homelands (607 total)



Geographic Expansion

Counties and County Equivalents (3141 total)



Demographic Characteristics



Sex

Age

Race

Hispanic Origin

Relationship

Social Characteristics



Education

Marital Status

Fertility

Grandparents

Veterans

Disability

Language

Place of Birth

Citizenship

Year of Entry

Ancestry

Tribal Affiliation

Economic Characteristics

Income
Employment Status
Occupation
Industry
Commuting to Work
Place of Work



Housing Characteristics



Tenure

Occupancy status

Housing Value

Taxes & Insurance

Utilities

Mortgage

Monthly Rent

Data products for all users

Data profiles

Narrative profiles

Subject tables

Geographic comparison tables

Thematic maps

Data Profile



U.S. Census Bureau

American FactFinder

[Main](#) | [Search](#) | [Feedback](#) | [FAQs](#) | [Glossary](#) | [Site Map](#) | [Help](#)

Data Profile

You are here: [Main](#) > [Data Sets](#) > [Geography](#) > [Results](#)

| [Print / Download](#) | [Related Items](#)

2007 Data Profiles:

- ▶ [Social](#)
- [Economic](#)
- [Housing](#)
- [Demographic](#)
- [Narrative](#)

View this table...

- ▶ [from 2007](#)

View this table...

[for other geographies \(state, county, place...\)](#)

- [Subject Definitions](#)
- [Quality Measures](#)



Ann Arbor city, Michigan

Selected Social Characteristics in the United States: 2005-2007 ?

Data Set: 2005-2007 American Community Survey 3-Year Estimates
Survey: American Community Survey

Social - Education, Marital Status, Relationships, Fertility, Grandparents...
Economic - Income, Employment, Occupation, Commuting to Work...
Housing - Occupancy and Structure, Housing Value and Costs, Utilities...
Demographic - Sex and Age, Race, Hispanic Origin, Housing Units...
Narrative - Text profile with graphs for easy analysis...

NOTE: Although the American Community Survey (ACS) produces population, demographic and housing unit estimates, it is the Census Bureau's Population Estimates Program that produces and disseminates the [official estimates of the population for the nation, states, counties, cities and towns and estimates of housing units for states and counties](#).

For more information on confidentiality protection, sampling error, nonsampling error, and definitions, see [Survey Methodology](#).

Selected Social Characteristics in the United States	Estimate	Margin of Error	Percent	Margin of Error
HOUSEHOLDS BY TYPE				
Total households	44,559	+/-827	100%	(X)
Family households (families)	21,152	+/-807	47.5%	+/-1.9
With own children under 18 years	9,622	+/-547	21.6%	+/-1.2
Married-couple family	16,690	+/-787	37.5%	+/-1.8
With own children under 18 years	7,159	+/-553	16.1%	+/-1.2
Male householder, no wife present, family	1,397	+/-389	3.1%	+/-0.9
With own children under 18 years	683	+/-292	1.5%	+/-0.7
Female householder, no husband present, family	3,065	+/-385	6.9%	+/-0.9
With own children under 18 years	1,780	+/-349	4.0%	+/-0.8
Nonfamily households	23,407	+/-1,037	52.5%	+/-1.9
Householder living alone	15,873	+/-929	35.6%	+/-1.9
65 years and over	2,851	+/-355	6.4%	+/-0.8
Households with one or more people under 18 years	10,216	+/-549	22.9%	+/-1.2
Households with one or more people 65 years and over	6,348	+/-378	14.2%	+/-0.9

U.S. CENSUS BUREAU

26

Narrative Profile

United States

Selected Social Characteristics in the United States: 2006 ?

Data Set: **2006 American Community Survey**

Survey: **2006 American Community Survey**

[Social](#) - Education, Marital Status, Relationships, Fertility, Grandparents...

[Economic](#) - Income, Employment, Occupation, Commuting to Work...

[Housing](#) - Occupancy and Structure, Housing Value and Costs, Utilities...

[Demographic](#) - Sex and Age, Race, Hispanic Origin, Housing Units...

[Narrative](#) - Text profile with graphs for easy analysis...

NOTE: Although the American Community Survey (ACS) produces population, demographic and housing unit estimates, it is the Census Bureau's Population Estimates Program that produces and disseminates the [official estimates of the population for the nation, states, counties, cities and towns](#) and estimates of housing units for states and counties.

For more information on confidentiality protection, sampling error, nonsampling error, and definitions, see [Survey Methodology](#).

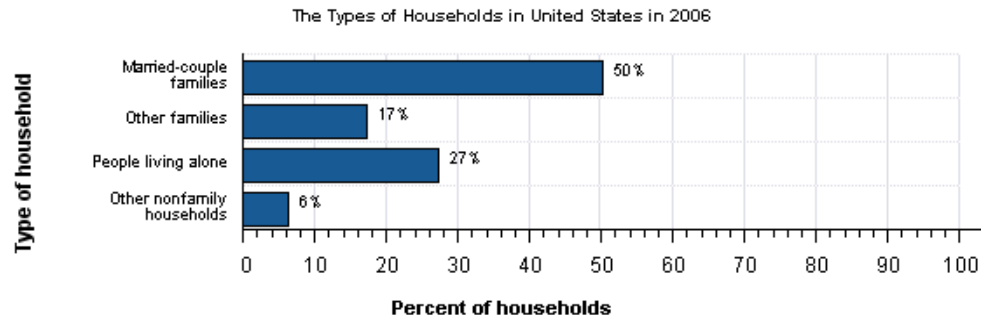
Selected Social Characteristics in
HOUSEHOLDS BY TYPE
Total households
Family households (families)
With own children under 18 years
Married-couple families
With own children under 18 years
Male householder, no wife present
With own children under 18 years
Female householder, no husband present
With own children under 18 years
Nonfamily households
Householder living alone
65 years and over

United States

Population and Housing Narrative Profile: 2006

HOUSEHOLDS AND FAMILIES: In 2006 there were 111.6 million households in United States. The average household size was 2.6 people.

Families made up 67 percent of the households in United States. This figure includes both married-couple families (50 percent) and other families (17 percent). Nonfamily households made up 33 percent of all households in United States. Most of the nonfamily households were people living alone, but some were composed of people living in households in which no one was related to the householder.



Subject Tables on Employment

Employment

S2408 [Class of Worker by Sex and Median Earnings for the Civilian Employed Population](#)

S2409 [Class of Worker by Sex and Median Earnings for the Full-Time, Year-Round Civilian Employed Population](#)

S2302 [Employment Characteristics of Families](#)

S2301 [Employment Status](#)

S2407 [Industry by Class of Worker for Civilian Employed Population](#)

S2405 [Industry by Occupation for the Civilian Employed Population](#)

S2404 [Industry by Sex and Median Earnings in the Past 12 Months for Full-Time, Year-Round Civilian Employed Population](#)

S2403 [Industry by Sex and Median Earnings in the Past 12 Months for the Civilian Employed Population](#)

S2406 [Occupation by Class of Worker for the Civilian Employed Population](#)

S2402 [Occupation by Sex and Median Earnings in the Past 12 Months for Full-Time, Year-Round Civilian Employed Population](#)

S2401 [Occupation by Sex and Median Earnings in the Past 12 Months for the Civilian Employed Population](#)

S2303 [Work Status in the Past 12 Months](#)

Sample Subject Table

Subject Tables

You are here: [Main](#) ▶ [Data Sets](#) ▶ [Geography](#) ▶ [Tables](#) ▶ Results

[Options](#) | [Print / Download](#) | [Related Items](#)

View this table...

▶ from 2006
from 2005

Change...

[geography \(state, county, place...\)](#)
[table](#)

- [Subject Definitions](#)
- [Quality Measures](#)

Colorado

S2301. Employment Status [?]

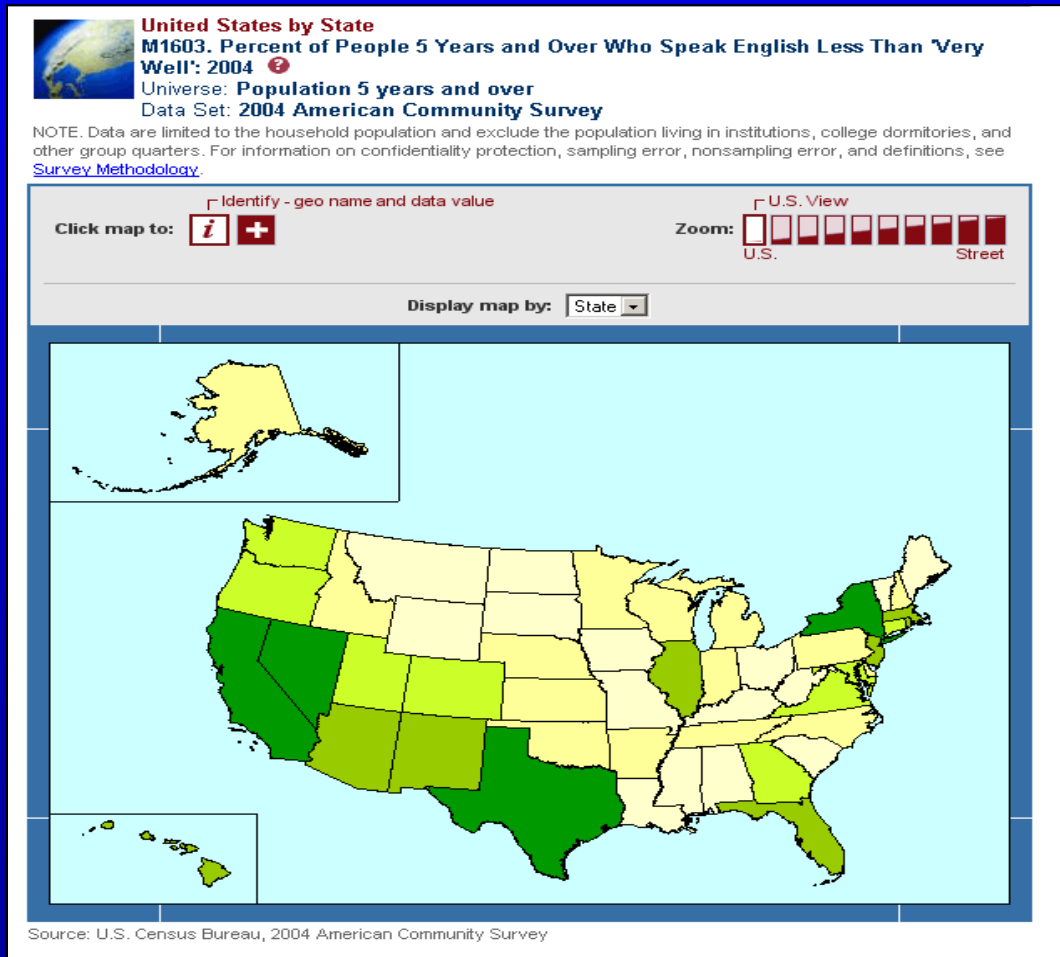
Data Set: 2006 American Community Survey

Survey: American Community Survey

NOTE: For information on confidentiality protection, sampling error, nonsampling error, and definitions, see [Survey Methodology](#).

Subject	Total	Margin of Error	In labor force	Margin of Error	Employed	Margin of Error	Unemployment rate	Margin of Error
Population 16 years and over	3,712,889	+/-4,064	70.0%	+/-0.4	65.5%	+/-0.4	5.5%	+/-0.2
AGE								
16 to 19 years	256,659	+/-4,312	51.2%	+/-1.5	40.2%	+/-1.5	19.9%	+/-1.8
20 to 24 years	337,730	+/-4,063	79.7%	+/-1.3	69.9%	+/-1.4	9.1%	+/-1.1
25 to 44 years	1,431,521	+/-4,901	83.5%	+/-0.4	79.0%	+/-0.5	4.5%	+/-0.3
45 to 54 years	720,742	+/-3,534	82.7%	+/-0.7	79.1%	+/-0.8	4.2%	+/-0.4
55 to 64 years	489,352	+/-1,960	66.8%	+/-1.0	64.3%	+/-1.0	3.7%	+/-0.5
65 to 74 years	256,742	+/-1,995	26.3%	+/-1.1	25.6%	+/-1.1	2.6%	+/-0.9
75 years and over	220,143	+/-1,749	5.7%	+/-0.7	5.6%	+/-0.7	1.3%	+/-1.2
RACE AND HISPANIC OR LATINO ORIGIN								
One race	N	N	N	N	N	N	N	N
White	3,131,383	+/-10,150	70.1%	+/-0.4	66.0%	+/-0.4	4.9%	+/-0.2
Black or African American	133,385	+/-3,286	69.6%	+/-2.1	61.5%	+/-2.2	9.7%	+/-1.5
American Indian and Alaska Native	33,355	+/-2,850	66.7%	+/-3.6	58.7%	+/-4.1	11.0%	+/-3.2
Asian	104,209	+/-2,663	70.1%	+/-2.5	64.8%	+/-2.6	6.3%	+/-2.0
Native Hawaiian and Other Pacific Islander	N	N	N	N	N	N	N	N
Some other race	241,644	+/-9,387	70.3%	+/-1.4	64.0%	+/-1.5	8.5%	+/-1.3
Two or more races	65,740	+/-4,730	69.6%	+/-3.3	61.9%	+/-3.2	10.1%	+/-2.6

Thematic Maps




Data products for advanced users

Detailed tables

Summary files

Public Use Microdata Sample (PUMS)
files

Detailed Tables


U.S. Census Bureau
American FactFinder

[Main](#) | [Search](#) | [Feedback](#) | [FAQs](#) | [Glossary](#) | [Site Map](#) | [Help](#)

Detailed Tables

You are here: [Main](#) > [Data Sets](#) > [Data Sets with Detailed Tables](#) > [Geography](#) > [Tables](#) > [Results](#)

Use the links above to change your results | [Options](#) | [Print / Download](#) | [Related Items](#)

[B18020. DISABILITY STATUS BY SEX BY AGE BY EMPLOYMENT STATUS FOR THE CIVILIAN NONINSTITUTIONALIZED POPULATION 16 TO 64 YEARS - Universe: CIVILIAN NONINSTITUTIONALIZED POPULATION 16 TO 64 YEARS](#)
 Data Set: [2007 American Community Survey 1-Year Estimates](#)
 Survey: American Community Survey

NOTE. Although the American Community Survey (ACS) produces population, demographic and housing unit estimates, it is the Census Bureau's Population Estimates Program that produces and disseminates the [official estimates of the population for the nation, states, counties, cities and towns and estimates of housing units for states and counties](#).

For information on confidentiality protection, sampling error, nonsampling error, and definitions, see [Survey Methodology](#).

View the [collapsed version of this table](#). Geographies missing from this table are listed below the table.

	Ann Arbor, MI Metro Area	
	Estimate	Margin of Error
Total:	249,569	+/-867
With any disability:	24,183	+/-2,340
Male:	11,405	+/-1,597
16 to 34 years:	4,032	+/-1,051
Employed	1,714	+/-711
Not employed	2,318	+/-832
35 to 64 years:	7,373	+/-1,237
Employed	3,209	+/-812
Not employed	4,164	+/-946
Female:	12,778	+/-1,498
16 to 34 years:	3,344	+/-821
Employed	1,528	+/-541
Not employed	1,816	+/-693
35 to 64 years:	9,434	+/-1,412
Employed	3,407	+/-814
Not employed	6,027	+/-1,118
No disability:	225,386	+/-2,437
Male:	114,190	+/-1,733
16 to 34 years:	54,900	+/-1,312
Employed	34,122	+/-2,274

Data Dissemination Plan

We will disseminate all ACS data products through the American FactFinder

We plan to release census block group data and some detailed tables only as text-based downloadable files



FactFinder

[Main](#) [Search](#) [Feedback](#) [FAQs](#) [Glossary](#) [Site Map](#) [Help](#)

Your source for population, housing, economic, and geographic data

POPULATION FINDER

FACT SHEET

PEOPLE

HOUSING

BUSINESS AND GOVERNMENT

ABOUT THE DATA

DATA SETS

DOWNLOAD CENTER

MAPS

TOOLS AND REFERENCES

Address Search...

Enter a [street address](#) to find Census 2000 data

- [Browser Notes](#)
- [Confidentiality](#)
- [Citing FactFinder](#)

Fast Access to Information



Get a Fact Sheet for your community...

city/ town, county, or zip

state

[or select a state using a map »](#)

Getting Detailed Data

Decennial Census - taken every 10 years to collect information about the people and housing of the United States

[learn more](#) | [get data](#)

See the [Count Question Resolution Program](#) for information on Census 2000 count corrections.

American Community Survey - an ongoing survey that provides data about your community every year

[learn more](#) | [get data](#)

Puerto Rico Community Survey - the equivalent of the American Community Survey for Puerto Rico

[learn more](#) | [get data](#) | [en español](#)

Population Estimates Program - population numbers between censuses

[learn more](#) | [get data](#)

Economic Census - profiles the U.S. economy every 5 years

[learn more](#) | [get data](#)

Annual Economic Surveys - data from the Annual Survey of Manufactures, County Business Patterns and Nonemployer Statistics

[learn more](#) | [get data](#)

Population Data

Population Finder

Use the [Population Finder](#) to view population trends for your community.

U.S. Population Clock



22:26 GMT (EST+5) Jan 09, 2009

305,584,179

more [population clocks »](#)

What's New



Updates to American FactFinder released December 9, 2008. [more »](#)

2005-2007 American Community Survey 3-Year

Estimates are now available for cities, counties and other areas with populations of 20,000 or more from the [Data Sets page](#).

2007 Commodity Flow Survey data are now available from the Economic Census [Data Sets page](#).

2006 Annual Survey of Manufactures has been [updated](#). New data are now available from the [Data Sets page](#).

2007 Population Estimates for housing units are now available from the [Data Sets](#)



Data Sets

- POPULATION FINDER
- FACT SHEET
- PEOPLE
- HOUSING
- BUSINESS AND GOVERNMENT
- ABOUT THE DATA
- DATA SETS**
 - Decennial Census
 - **American Community Survey**
 - Puerto Rico Community Survey
 - Annual Population Estimates
 - Economic Census
 - Annual Economic Surveys
- DOWNLOAD CENTER
- MAPS
- TOOLS AND REFERENCES

Main ▶ Data Sets

AMERICAN COMMUNITY SURVEY

[Load Query](#) | [Clear all selections](#)

The American Community Survey is a nationwide survey designed to provide communities a fresh look at how they are changing. The Puerto Rico Community Survey is the equivalent of the American Community Survey for Puerto Rico. [more...](#)

[2007 Quick Guide](#) | [Errata Notes](#)

Other Resources

- [American Community Survey Main Page](#)
- [Quality Measures](#)
- [Public Use Microdata Sample \(PUMS\)](#) - download data and view documentation
- [Download Center](#)
- [Download 1996-2004 data via FTP](#)

[Explain Table and Map Formats](#)

2007

2005-2007 American Community Survey 3-Year Estimates

- Data from the American Community Survey and the Puerto Rico Community Survey
- Collected during calendar years 2005, 2006 and 2007
- Available for geographic areas with populations of 20,000 or more

[Explain 1-year vs. 3-year estimates](#)

2007 American Community Survey 1-Year Estimates

- Data from the American Community Survey and the Puerto Rico Community Survey
- Collected during calendar year 2007
- Available for geographic areas with populations of 65,000 or more

[Explain 1-year vs. 3-year estimates](#)

2006

2006 American Community Survey

Includes results from both the American Community Survey and the Puerto Rico Community Survey. The 2006 data products include

Select from the following:

- [Data Profiles](#)
- [Selected Population Profiles](#)
- [Subject Tables](#)
- [Detailed Tables](#)
- [Geographic Comparison Tables](#)
- [Thematic Maps](#)
- [Reference Maps](#)
- [Custom Table](#)
- [Enter a table number](#)
- [List all tables](#)
- [List all maps](#)
- [About this data set](#)



Select Geography

You are here: [Main](#) > [Data Sets](#) > [Data Sets with Detailed Tables](#) > **Geography** > Tables > Results
2005-2007 American Community Survey 3-Year Estimates, Detailed Tables

Choose a selection method

list

name search

address search

map

geo within geo

[i Explain Census Geography](#) | [i Where are Geographic Components \(Urban and Rural\)?](#)

Select a [geographic type](#)

..... County

Select a state

Michigan

Select one or more geographic areas and click 'Add'

- Sanilac County
- Shiawassee County
- St. Clair County
- St. Joseph County
- Tuscola County
- Van Buren County
- Washtenaw County
- Wayne County

[Explain Missing Geographies](#)

Map It

Add

Current geography selections:

==== County =====
Washtenaw County, Michigan

Download data for more than 7,000 geographic areas using the [Download Center](#).

Remove

Next



Select Tables

You are here: [Main](#) ▶ [Data Sets](#) ▶ [Data Sets with Detailed Tables](#) ▶ [Geography](#) ▶ [Tables](#) ▶ Results
2005-2007 American Community Survey 3-Year Estimates, Detailed Tables

■ Choose a table selection method

[by subject](#) [by keyword](#) [show all tables](#)

■ Select one or more tables and click 'Add'

[i explain table numbers](#)

- B04007. Ancestry
- C04007. Ancestry
- B05001. Citizenship Status in the United States**
- C05001. Citizenship Status in the United States
- B05001-PR. Citizenship Status in Puerto Rico
- B05002. Place of Birth by Citizenship Status
- C05002. Place of Birth by Citizenship Status
- B05003. Sex by Age by Citizenship Status
- C05003. Sex by Age by Citizenship Status
- B05003A. Sex by Age by Citizenship Status (White Alone)

Abbreviations:
 Black - Black or African American
 AIAN - American Indian and Alaska Native
 NHPI - Native Hawaiian and Other Pacific Islander
 SOR - Some Other Race

[What's this?](#)

[Add](#) ▼

Current table selections:

B05001. Citizenship Status in the United States

[Remove](#)

[Show Result](#) ▶



Detailed Tables

You are here: [Main](#) ▶ [Data Sets](#) ▶ [Data Sets with Detailed Tables](#) ▶ [Geography](#) ▶ [Tables](#) ▶ [Results](#)

Use the links above to change your results

[Options](#)

[Print / Download](#)

[Related Items](#)

[B05001. CITIZENSHIP STATUS IN THE UNITED STATES - Universe: TOTAL POPULATION IN THE UNITED STATES](#)

Data Set: [2005-2007 American Community Survey 3-Year Estimates](#)

Survey: American Community Survey

NOTE. Although the American Community Survey (ACS) produces population, demographic and housing unit estimates, it is the Census Bureau's Population Estimates Program that produces and disseminates the [official estimates of the population for the nation, states, counties, cities and towns and estimates of housing units for states and counties](#).

For information on confidentiality protection, sampling error, nonsampling error, and definitions, see [Survey Methodology](#).

View the [collapsed version of this table](#). Geographies missing from this table are listed below the table.

	Washtenaw County, Michigan	
	Estimate	Margin of Error
Total:	347,670	*****
U.S. citizen, born in the United States	304,831	+/-1,887
U.S. citizen, born in Puerto Rico or U.S. Island Areas	446	+/-204
U.S. citizen, born abroad of American parent(s)	2,706	+/-501
U.S. citizen by naturalization	13,912	+/-1,136
Not a U.S. citizen	25,775	+/-1,612

Source: U.S. Census Bureau, 2005-2007 American Community Survey

Data are based on a sample and are subject to sampling variability. The degree of uncertainty for an estimate arising from sampling variability is represented through the use of a margin of error. The value shown here is the 90 percent margin of error. The margin of error can be interpreted roughly as providing a 90 percent probability that the interval defined by the estimate minus the margin of error and the estimate plus the margin of error (the lower and upper confidence bounds) contains the true value. In addition to sampling variability, the ACS estimates are subject to nonsampling error (for a discussion of nonsampling variability, see [Accuracy of the Data](#)). The effect of nonsampling error is not represented in these tables.

Interpreting ACS 5-year estimates

Based on data collected between
January 2005 and December 2009

Represent the average characteristics
over this time period

Interpreting 5-year estimates

Examples

Fictitious data

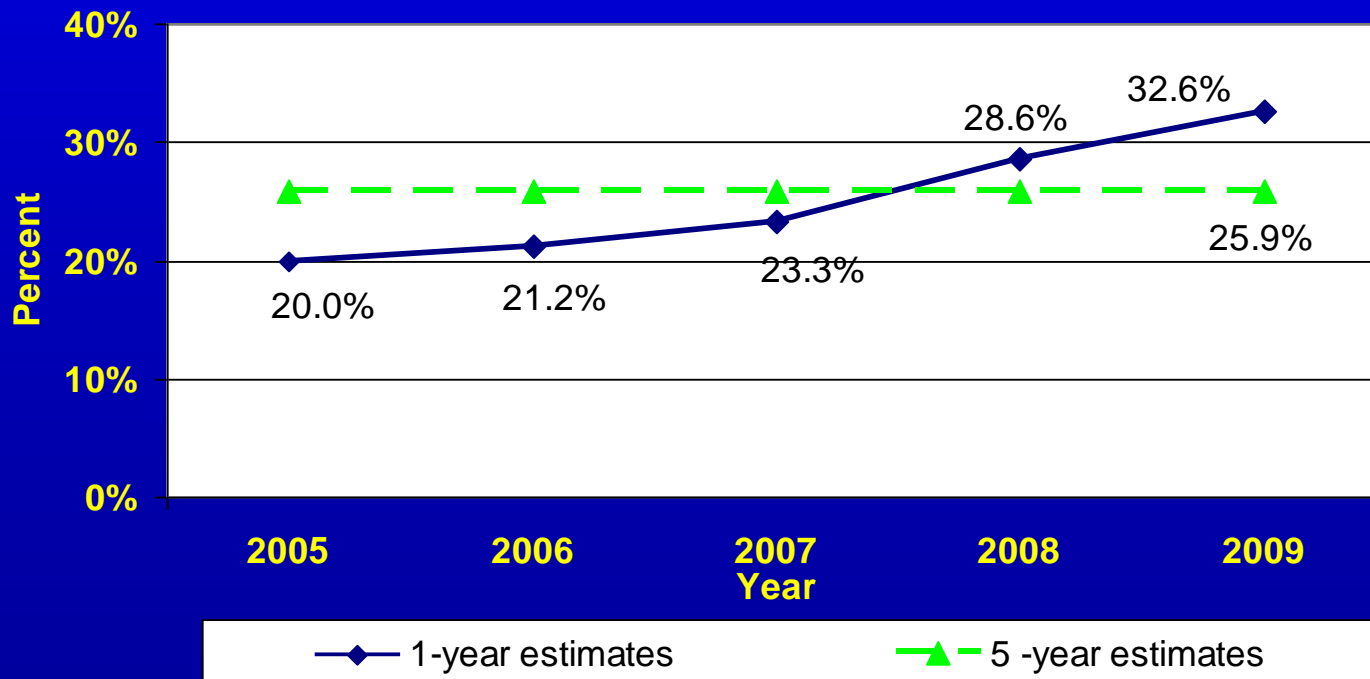
Characteristic with year-to-year increases

Characteristic with annual fluctuations
(increases and decreases)

Characteristic with little change over time

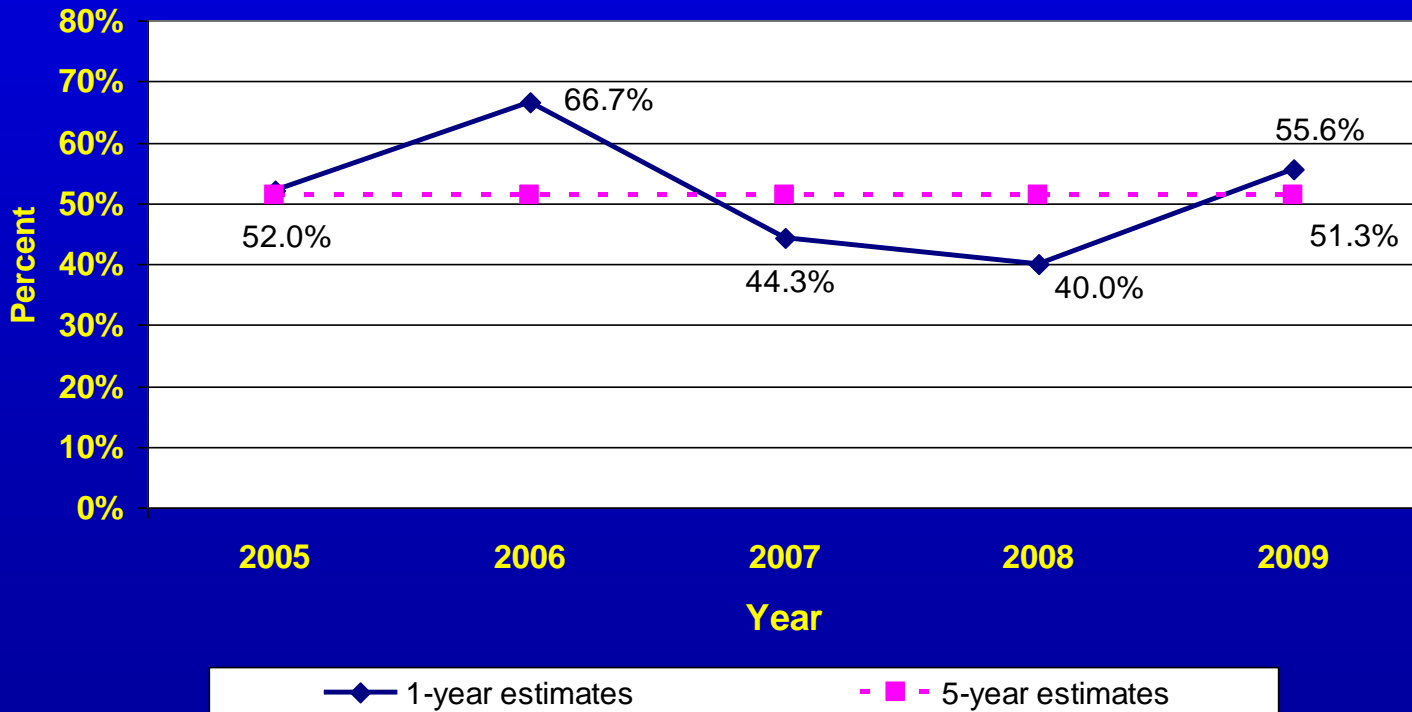
Characteristic with year-to-year increases

Percent Foreign Born Population

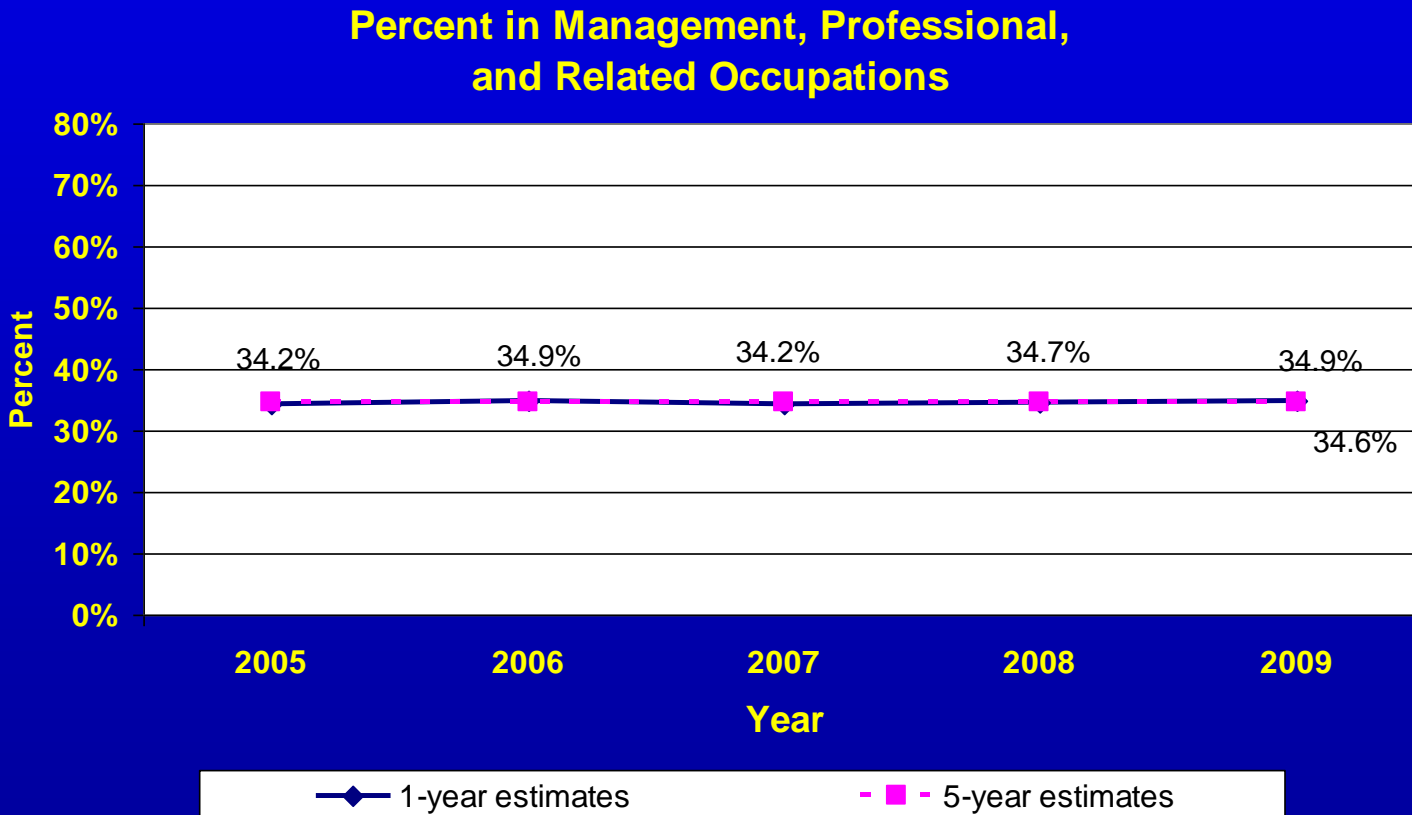


Characteristic with annual fluctuations

Homeownership rates



Characteristic with little change over time



Census 2000 and ACS Similarities

Census 2000 questions are on the ACS

ACS produces many of the same tables
and characteristics as Census 2000

Census 2000 and ACS Similarities

Same broad set of geographic areas

Same basic data dissemination vehicle –
American FactFinder and same basic
types of data products

Census 2000 and ACS Key Differences

ACS data are collected continuously and
all ACS estimates are period estimates

Estimates will be released every year
rather than once-a-decade

Census 2000 and ACS

Key Differences

ACS estimates are released in the form of both single year and multiyear estimates

ACS estimates have more sampling error

Quality of ACS Estimates

Margins of error around ACS 5-year estimates will be about 1.75 times as large as those associated with the Census 2000 sample estimates

Evaluations have found reductions in ACS nonsampling error relative to Census 2000

Comparing Data from the ACS with Census 2000

U.S. Census Bureau

People | Business | Geography | Newsroom | Subjects A to Z | Search@Cens

American Community Survey

You are here: [Census.gov](#) | [American Community Survey](#) | [Guidance for Data Users](#) | [Data Users](#)

Main | About the Survey | **Guidance for Data Users**

- Guidance Main
- Geography and the ACS
- When to use 1-year, 3-year, or 5-year estimates
- Comparing ACS Data**
 - 2009
 - 2008
 - 2007
- Handbooks for Data Users
- Training Presentations
- E-Tutorial

Comparing 2009 American Community Survey Data with Census 2000

Subject Area*	2009 ACS	2000 Census
Age and Sex (01)	Compare	Compare
Race (02)	Compare	Compare
Hispanic Origin (03)	Compare	Compare
Ancestry (04)	Compare	Compare
Foreign Born; Citizenship; Year of Entry; Nativity (05)	Compare	Compare
Place of Birth (06)	Compare	Compare
Residence 1 year ago; Migration (07)	Do Not Compare (Details)	Compare

Residence 1 year ago; Migration (07)

Topic	2009 ACS with Census 2000
Residence 1 Year Ago (Migration)	<p>Do Not Compare (Details)</p> <p>The ACS asked for residence 1 year ago whereas Census 2000 asked for residence 5 years ago.</p>

To summarize

... 10 things you should know about the
ACS 5-year estimates

1. It's Not the 2010 Census

United States Census 2010

This is the official form for all the people at this address. It is quick and easy, and your answers are protected by law.

U.S. DEPARTMENT OF COMMERCE Bureau of Economic Analysis U.S. CENSUS BUREAU

Use a blue or black pen. **Start here**

The Census must count every person living in the United States on April 1, 2010. Before you answer Questions 1 through 13, read the instructions and guidelines.

Count all people who live and sleep here most of the time. Do not count people who are in institutions and other places that are not homes.

Do not count people who are at college or in the Armed Forces, in a nursing home, in a prison, or in a long-term care facility. Do not count people who leave college or the military to return to the household. Otherwise, they must be counted. Do not count people who are away from home temporarily.

Do not count people who have no permanent place to live. Do not count people who were living or staying in this household, apartment, or mobile home on April 1, 2010?

Person 1's name: First name last name? Print name below.

5. Please provide information for each person living here. Start with a person living here who owns or rents this house, apartment, or mobile home. If the owner or renter lives somewhere else, start with any adult who lives here. This will be Person 1.

6. What is Person 1's sex? Male Female

7. What is Person 1's age and what is their date of birth? Please report dates as age 0 when the person is 1 year old.

8. Is Person 1 of Hispanic, Latino, or Spanish origin?

9. What is Person 1's race? Mark one or more boxes.

10. Is Person 1 the owner or renter of this house, apartment, or mobile home?

11. What is Person 1's telephone number? Area Code + Number

12. How many people are living or staying here on April 1, 2010? List all people living or staying here on April 1, 2010, including yourself, who are living or staying here for more than 2 months. Do not include people who are living or staying here for 2 months or less.

OMB No. 0807-0195C Approval Expires 12/31/2011

Form C-01 (1-2009)

U.S. DEPARTMENT OF COMMERCE Bureau of Economic Analysis U.S. CENSUS BUREAU

THE American Community Survey

This booklet shows the content of the American Community Survey questionnaire.

Please complete this form and return it as soon as possible after receiving it in the mail.

This form asks for information about the people who are living or staying at the address on the mailing label and about the house, apartment, or mobile home located at the address on the mailing label.

If you need help or have questions about completing this form, please call 1-800-354-7271. The telephone call is free.

Telephone Device for the Deaf (TDD): Call 1-800-354-6330. The telephone call is free.

¿NECESITA AYUDA? Si usted habla español y necesita ayuda para completar su cuestionario, llame al número de teléfono 1-877-633-6626. Usted también puede pedir un cuestionario en español o completar su entrevista por teléfono con un entrevistador que habla español.

For more information about the American Community Survey, visit our web site at <http://www.census.gov/acs/>

U.S. CENSUS BUREAU

ACS-11NFDQ2009KIT

OMB No. 0807-0195

Start Here

Please print today's date.

Please print the name and telephone number of the person who is filling out this form. We may contact you if there is a question.

Last Name

First Name

Area Code + Number

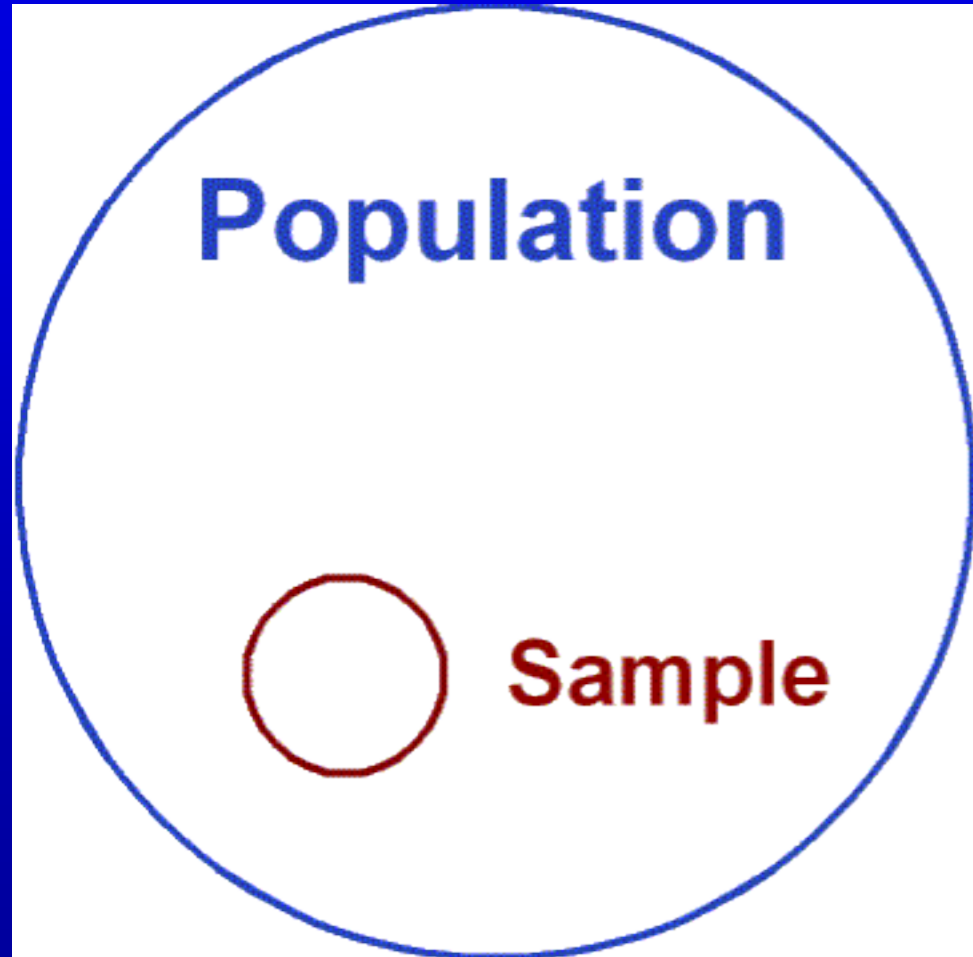
How many people are living or staying at this address?

- INCLUDE everyone who is living or staying here for more than 2 months.
- INCLUDE yourself if you are living here for more than 2 months.
- INCLUDE anyone else staying here who does not have another place to stay, even if they are here for 2 months or less.
- DO NOT INCLUDE anyone who is living somewhere else for more than 2 months, such as a college student living away or someone in the Armed Forces on deployment.

Number of people

Fill out pages 2, 3, and 6 for everyone, including yourself, who is living or staying at this address for more than 2 months. Then complete the rest of the form.

2. The data are based on a sample of the population



ACS Displays Margins of Error

Data Profile

You are here: [Main](#) ▶ [Data Sets](#) ▶ [Geography](#) ▶ [Results](#)

| [Print / Download](#) | [Related Items](#)

2007 Data Profiles:

▶ Social

- [Economic](#)
- [Housing](#)
- [Demographic](#)
- [Narrative](#)

[2007 Comparison Profile](#)

View this table...

▶ from 2007

- from [2006](#)
- from [2005](#)
- from [2004](#)
- from [2003](#)
- from [2002](#)

View this table...

[for other geographies \(state, county, place...\)](#)

- [Subject Definitions](#)
- [Quality Measures](#)



Washington city, District of Columbia

Selected Social Characteristics in the United States: 2007 ?

Data Set: **2007 American Community Survey 1-Year Estimates**
Survey: **American Community Survey**

- Social** - Education, Marital Status, Relationships, Fertility, Grandparents...
- [Economic](#) - Income, Employment, Occupation, Commuting to Work...
- [Housing](#) - Occupancy and Structure, Housing Value and Costs, Utilities...
- [Demographic](#) - Sex and Age, Race, Hispanic Origin, Housing Units...
- [Narrative](#) - Text profile with graphs for easy analysis...

NOTE. Although the American Community Survey (ACS) produces population, demographic and housing unit estimates, it is the Census Bureau's Population Estimates Program that produces and disseminates the [official estimates of the population for the nation, states, counties, cities and towns and estimates of housing units for states and counties](#).

For more information on confidentiality protection, sampling error, nonsampling error, and definitions, see [Survey Methodology](#).

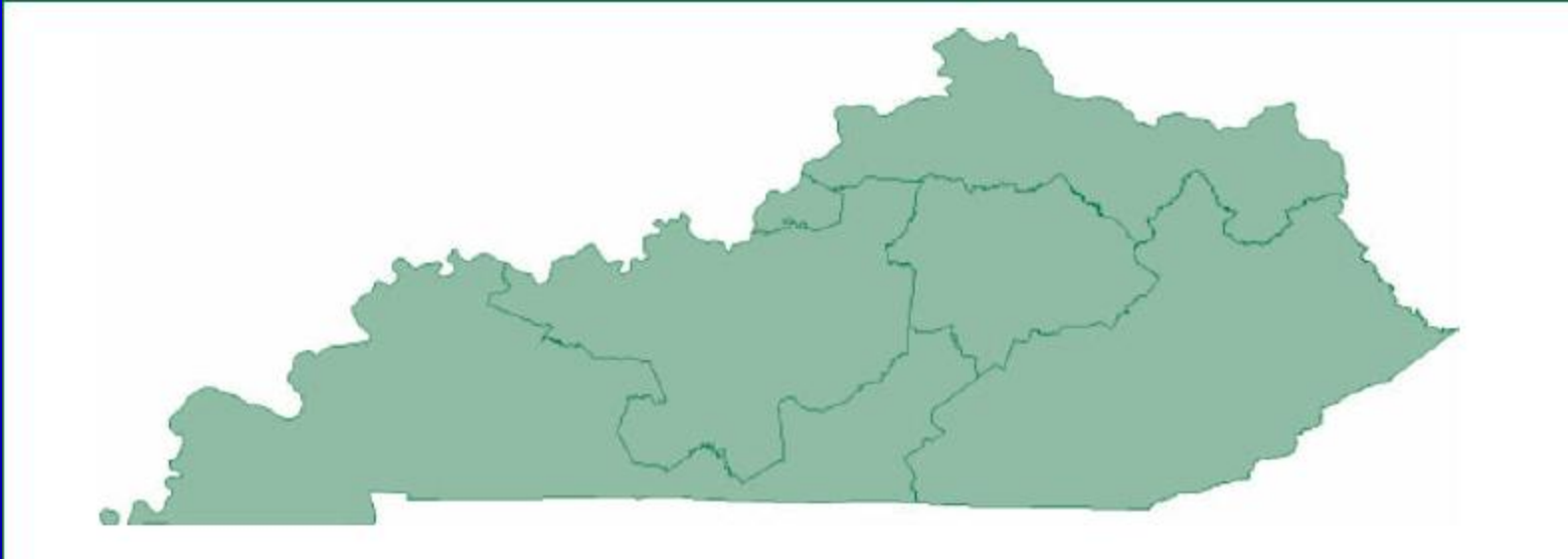
Selected Social Characteristics in the United States	Estimate	Margin of Error	Percent	Margin of Error
HOUSEHOLDS BY TYPE				
Total households	251,020	+/-2,911	100%	(X)
Family households (families)	108,181	+/-3,897	43.1%	+/-1.5
With own children under 18 years	45,089	+/-3,034	18.0%	+/-1.2
Married-couple family	55,790	+/-2,892	22.2%	+/-1.2
With own children under 18 years	18,752	+/-2,175	7.5%	+/-0.9
Male householder, no wife present, family	9,434	+/-1,574	3.8%	+/-0.6
With own children under 18 years	3,418	+/-1,105	1.4%	+/-0.4
Female householder, no husband present, family	42,957	+/-2,890	17.1%	+/-1.1
With own children under 18 years	22,919	+/-2,339	9.1%	+/-0.9

3. A wealth of content



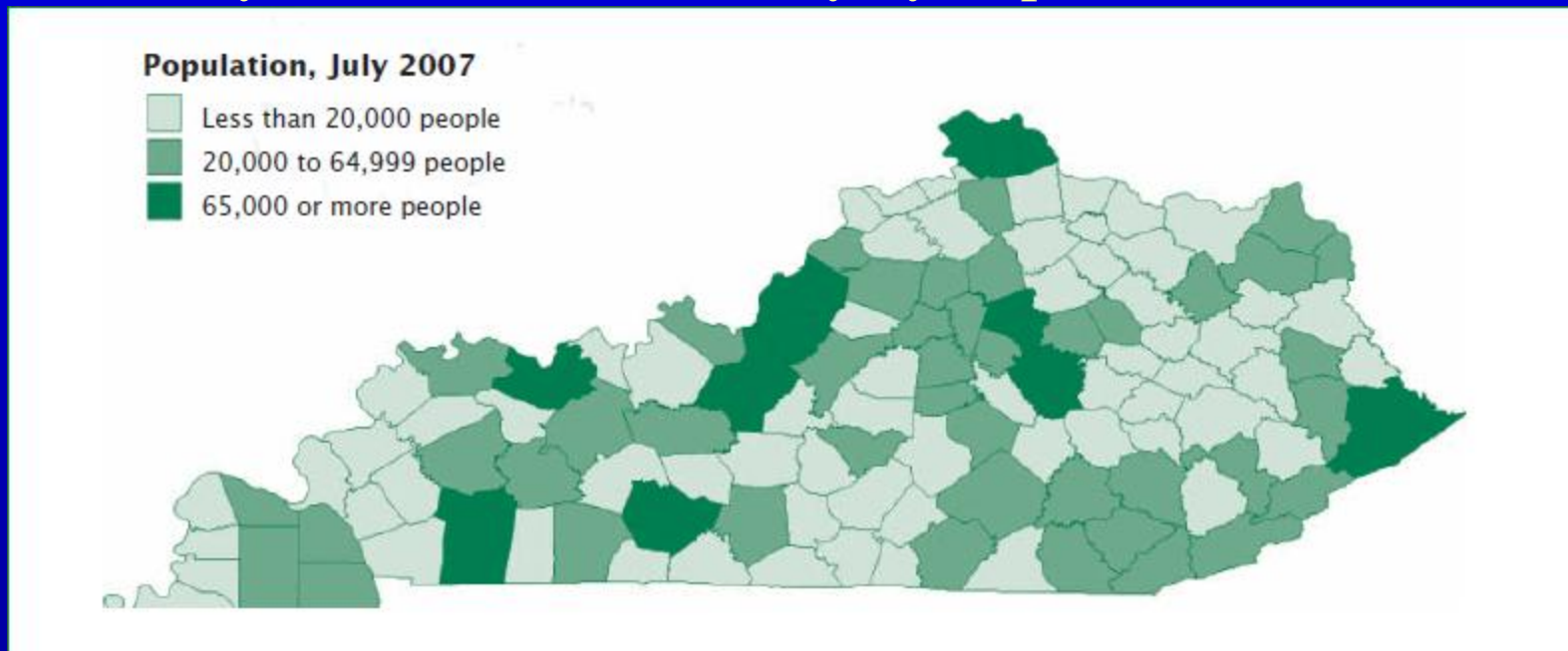
4. More geographic detail than you can imagine

Kentucky: 110th Congressional Districts



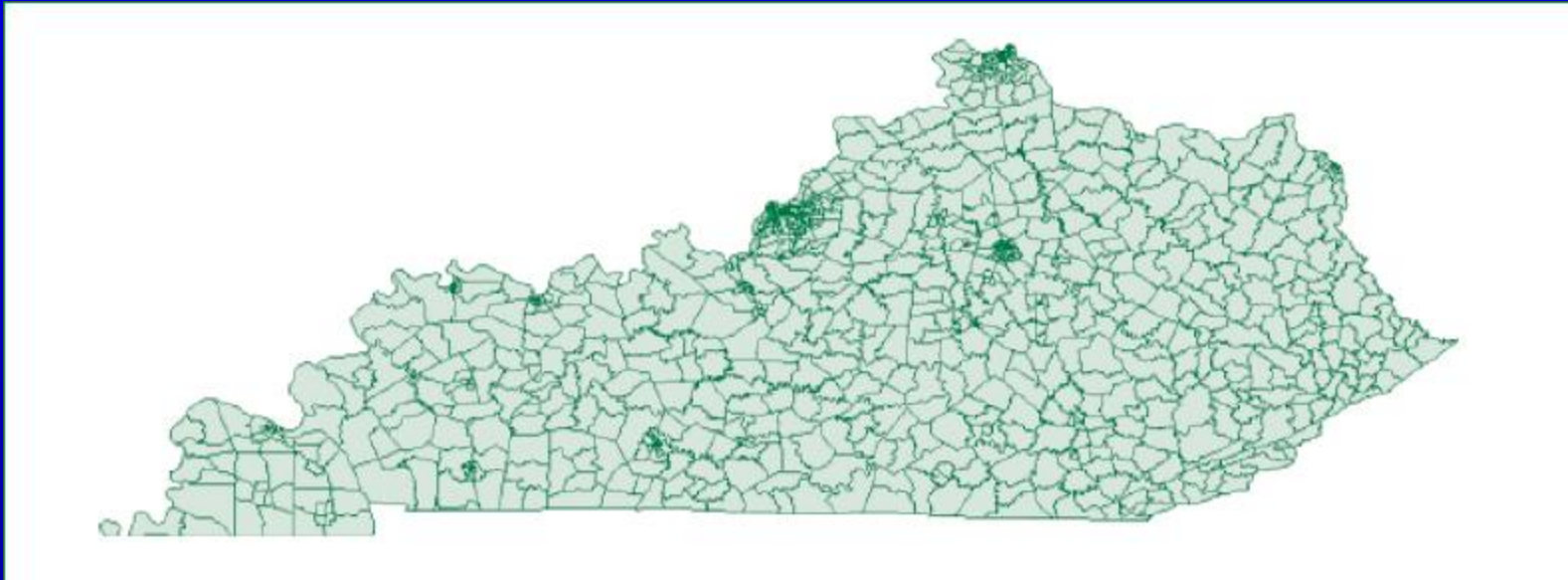
4. More geographic detail than you can imagine

Kentucky: Counties in Kentucky by Population Size



4. More geographic detail than you can imagine

Kentucky: Census Tracts



5. ACS data are very easy to access

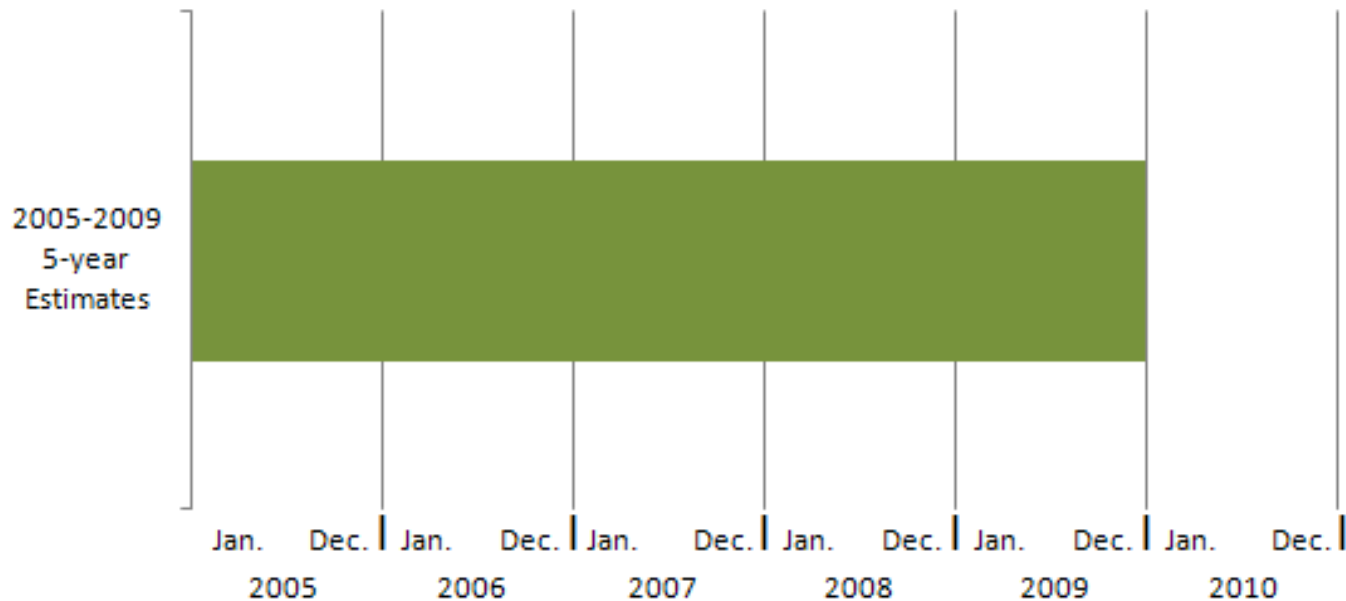


6. Public use microdata files are available

Relationship to head		Marital status		Occupation	
000098000100100210000	0791	220	22080211203900	999	009900000000001
000098000100200120000	0642	220	22080221203100	999	009900000000002
000098000100300041000	0231	100	22080221201000	832	00269000001202
000098000100400041000	0132	100	22080121203300	999	009900000000002
000098800100100210000	0351	210	22080223112300	723	00527000000302
000098800100200120000	0412	210	22080221203100	999	009900000000002
000098800100300030000	0172	100	22080222122300	998	009900000000002
000098800100400030000	0162	100	22080222123100	999	009900000000002
000098800100500649100	0192	210	22080222123100	999	009900000000002
000098800100600549100	0271	210	22080223121000	0122	00011000009602
000098800100700041000	0002	100	22080000000000	999	00990999999992
000098800100800049100	0221	100	22080223111000	0611	00011000002801
000100500100100210000	0451	210	22080122121000	0611	00011000002002
000100500100200120000	0342	210	22080122213100	999	009900000000002
000100500100300030000	0122	100	22080122123300	999	009900000000002
000101300100100210000	0651	220	22070221203430	999	009900000000002
000101300100200120000	0652	220	22080221203100	999	009900000000002
000101300100300030000	0332	350	22080222213100	999	009900000000002

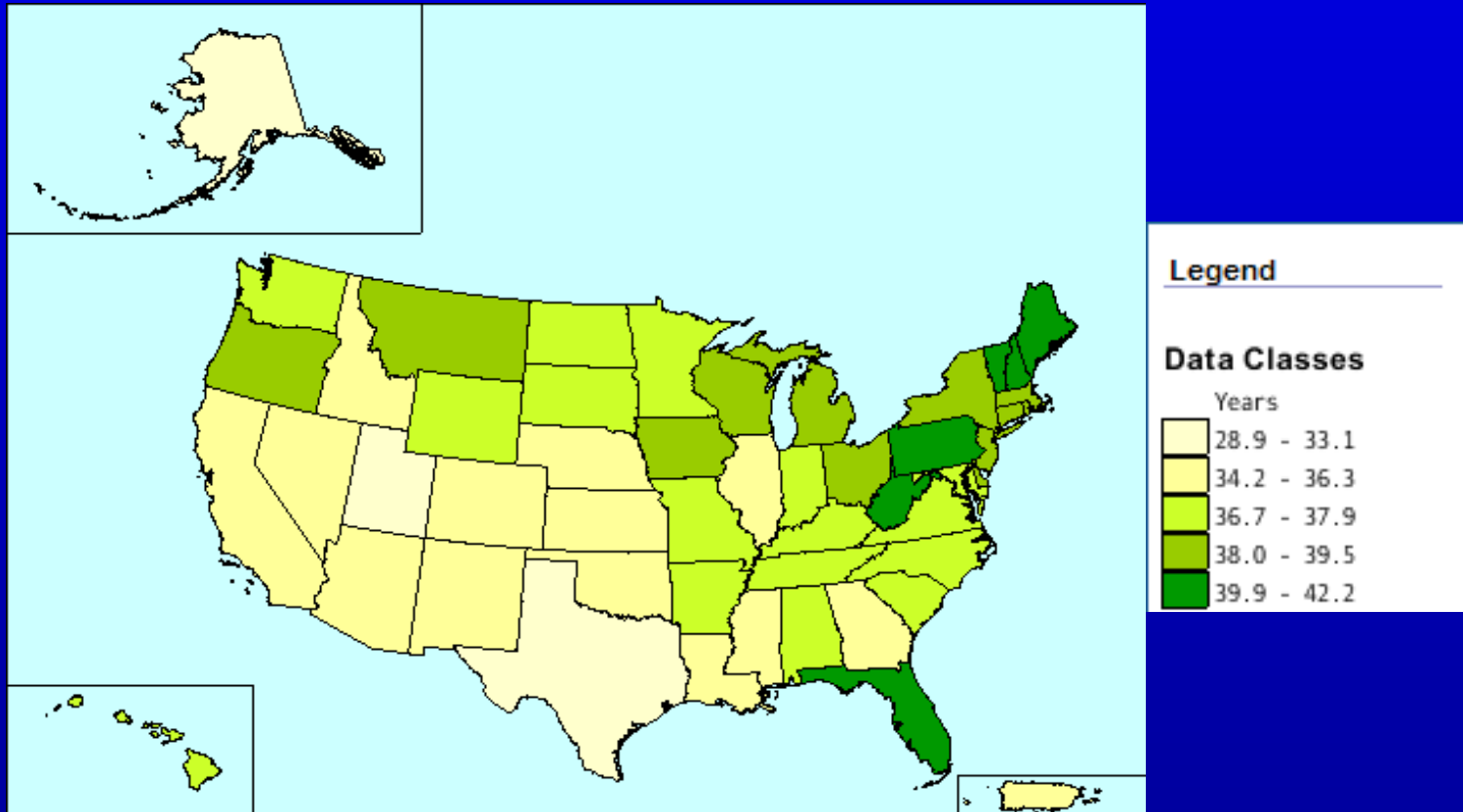
7. All estimates are period estimates

Data Collection Periods for the First 5-year Estimates



8. It's OK to compare

U.S. : Median Age of the Total Population



9. More data are coming

Data product	Population threshold	Year of Data Release							
		2006	2007	2008	2009	2010	2011	2012	2013
		Year(s) of Data Collection							
1-year estimates	65,000+	2005	2006	2007	2008	2009	2010	2011	2012
3-year estimates	20,000+			2005– 2007	2006– 2008	2007– 2009	2008– 2010	2009– 2011	2010– 2012
5-year estimates	All areas*					2005– 2009	2006– 2010	2007– 2011	2008– 2012

10. We can help



Customer Service Operator



E-tutorial



Compass Products

**Feel free to contact me with any of
your questions**

Deborah.H.Griffin@census.gov